

Kodak 8000C

Digital Panoramic and Cephalometric System

Clarity in the blink of an eye

Powerfully simple and surprisingly affordable, the Kodak 8000C system delivers clear, optimally exposed panoramic and cephalometric images in the blink of an eye. Now you can make fast, confident diagnoses, streamline practice workflow and improve communication with patients and colleagues.

"One Shot" cephalometric imaging

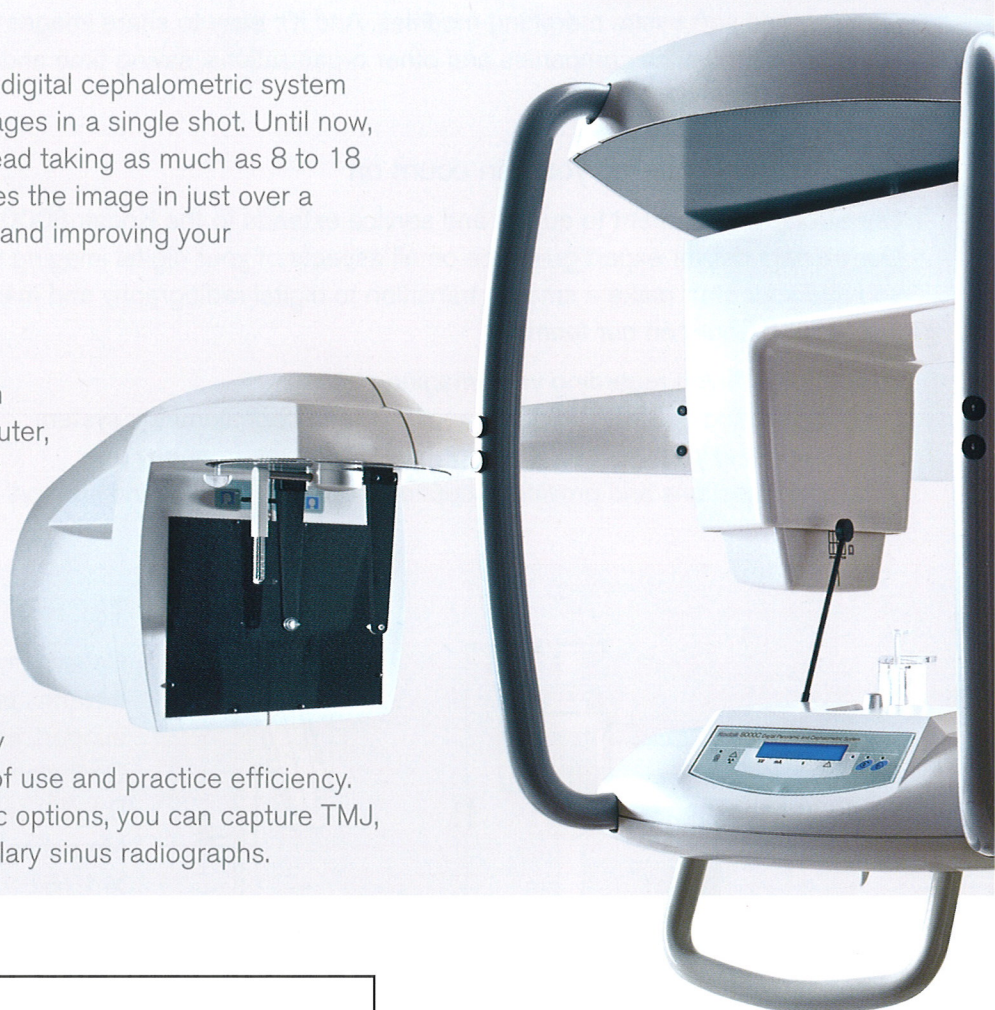
The Kodak 8000C system is the first direct digital cephalometric system that can expose standard cephalometric images in a single shot. Until now, direct digital systems scanned a patient's head taking as much as 8 to 18 seconds. Our "One Shot" technology captures the image in just over a second, reducing the risk of blurred images and improving your patient's comfort.

Easier by design

With the Kodak 8000C system, you perform all of the image programming on your computer, with a user-friendly interface. Easy-to-follow steps make it fast and simple to set all your patient and image parameters.

Complete digital imaging solution

With a full range of panoramic and cephalometric imaging capabilities, the Kodak 8000C system provides a completely integrated, digital solution for greater ease of use and practice efficiency. In addition to a wide variety of cephalometric options, you can capture TMJ, panoramic, segmented panoramic and maxillary sinus radiographs.



The Kodak 8000C system features:

1. "One Shot" cephalometric imaging for instant image capture
2. Comfortable, user-friendly patient positioning
3. Simple, intuitive image processing software
4. World-class service and support

Kodak 8000C

Digital Panoramic and Cephalometric System

Clarity in the blink of an eye

Powerfully simple and surprisingly affordable, the Kodak 8000C system delivers clear, optimally exposed panoramic and cephalometric images in the blink of an eye. Now you can make fast, confident diagnoses, streamline practice workflow and improve communication with patients and colleagues.

"One Shot" cephalometric imaging

The Kodak 8000C system is the first direct digital cephalometric system that can expose standard cephalometric images in a single shot. Until now, direct digital systems scanned a patient's head taking as much as 8 to 18 seconds. Our "One Shot" technology captures the image in just over a second, reducing the risk of blurred images and improving your patient's comfort.

Easier by design

With the Kodak 8000C system, you perform all of the image programming on your computer, with a user-friendly interface. Easy-to-follow steps make it fast and simple to set all your patient and image parameters.

Complete digital imaging solution

With a full range of panoramic and cephalometric imaging capabilities, the Kodak 8000C system provides a completely integrated, digital solution for greater ease of use and practice efficiency. In addition to a wide variety of cephalometric options, you can capture TMJ, panoramic, segmented panoramic and maxillary sinus radiographs.



The Kodak 8000C system features:

1. "One Shot" cephalometric imaging for instant image capture
2. Comfortable, user-friendly patient positioning
3. Simple, intuitive image processing software
4. World-class service and support

A smart, innovative addition to your practice

Powerful processing made simple

Our imaging software makes analysis easy with a number of powerful image-processing capabilities. From contrast and brightness to magnification and full-screen display, you have a full range of tools at your disposal to help you maximize your diagnostic findings.

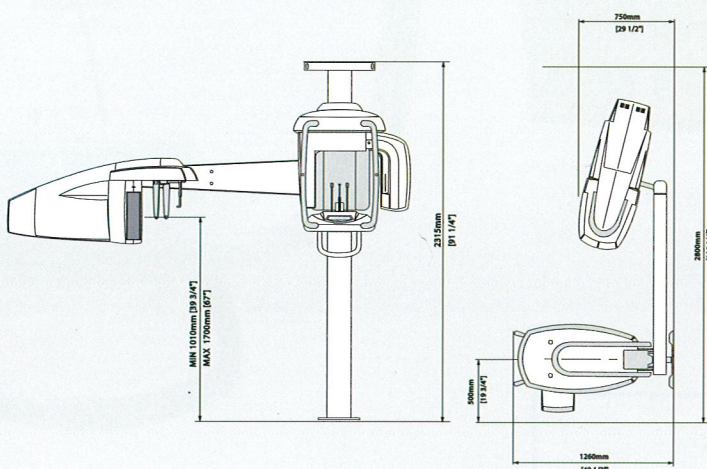
Efficient integration

The digital radiographs you acquire with the Kodak 8000C system can be integrated into your practice management software, along with cephalometric tracing, treatment planning and soft tissue morphing modules. And it's easy to share images with staff, colleagues, insurance companies and other organizations, saving time and improving workflow efficiency.

Support and guidance you can count on

Our strong commitment to quality and service extends to the Kodak 8000C system. Our trainers deliver expert guidance on all aspects of your digital imaging system, helping you and your staff make a smooth transition to digital radiography and maximize your investment. Count on our team to:

- Consult with you regarding your imaging needs
- Install the Kodak 8000C digital panoramic and cephalometric system
- Train you and your staff to take high-quality images from day one
- Answer questions and provide exceptional ongoing service and support



TECHNICAL SPECIFICATIONS

Patient Positioning:

Includes ear supports, adjustable graduated nasion support, and Frankfort positioning laser beam

Cephalometric Exposure Times:

0.1-3.2 seconds

Magnification:

X 1.15

Gray Scale Level:

4096 – 12 bit

Installation Configurations:

A variety of configurations available

For more information, call **1-800-944-6365** or visit **www.kodakdental.com/go/8000C**

Kodak
Licensed Product

PracticeWorks, Inc.

©PracticeWorks, Inc., 2007.

The Kodak trademark and trade dress are used under license from Kodak.

2205 10/29/07